

Notes:

Remove all burrs and sharp edges.

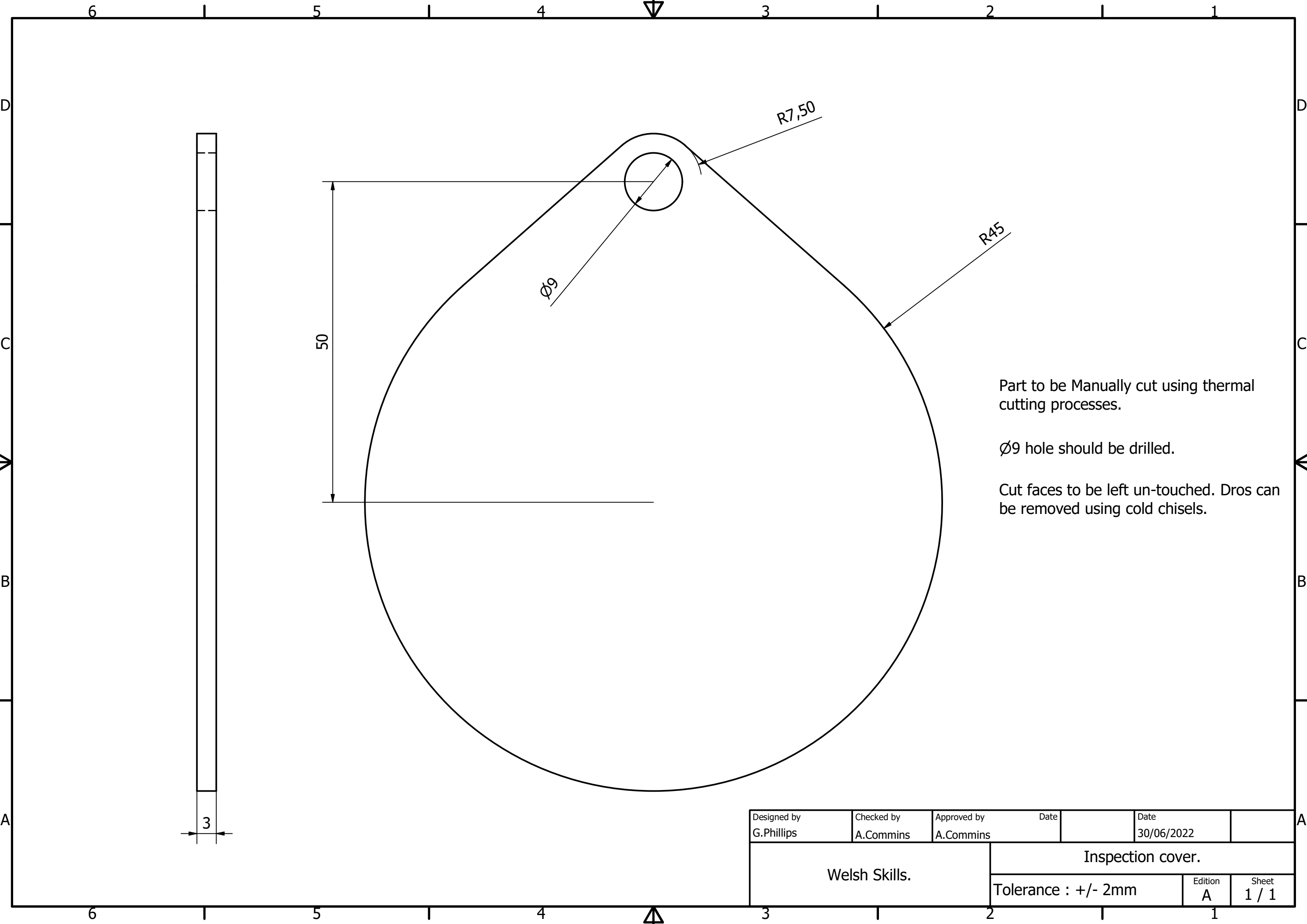
Do not dress flame cut profiles.

Weld Dimentions +2mm -0mm.

Material is LCS.

Teardrop to be flame/plasma cut and fitted prior to hand in.

Designed by G.Phillips	Checked by A.Commins	Approved by A.Commins	Date	Date 30/06/2022
Welsh Skills		Gear Cover.		
		Tolerance: +/- 2mm	Edition A	Sheet 1 / 1

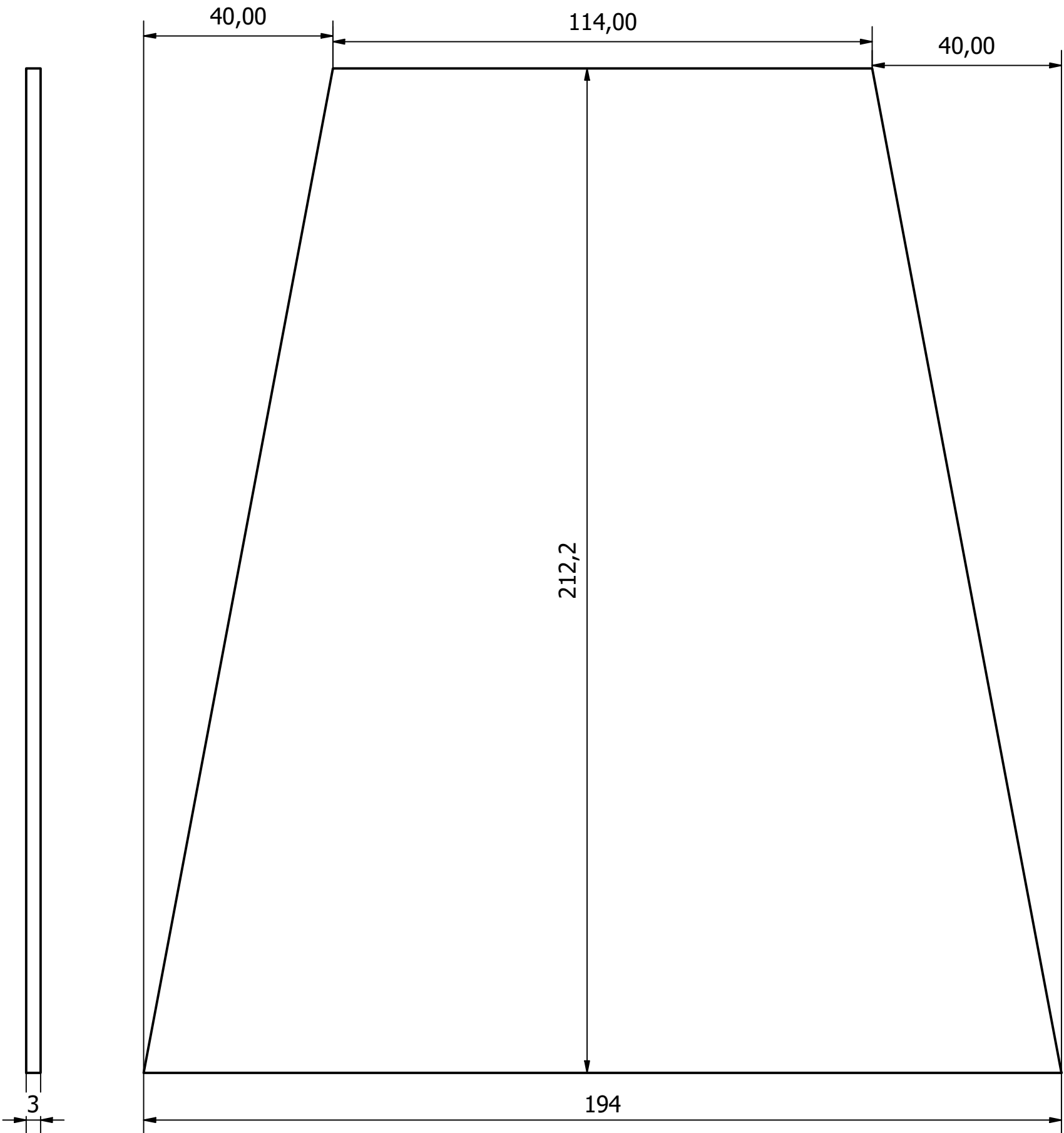
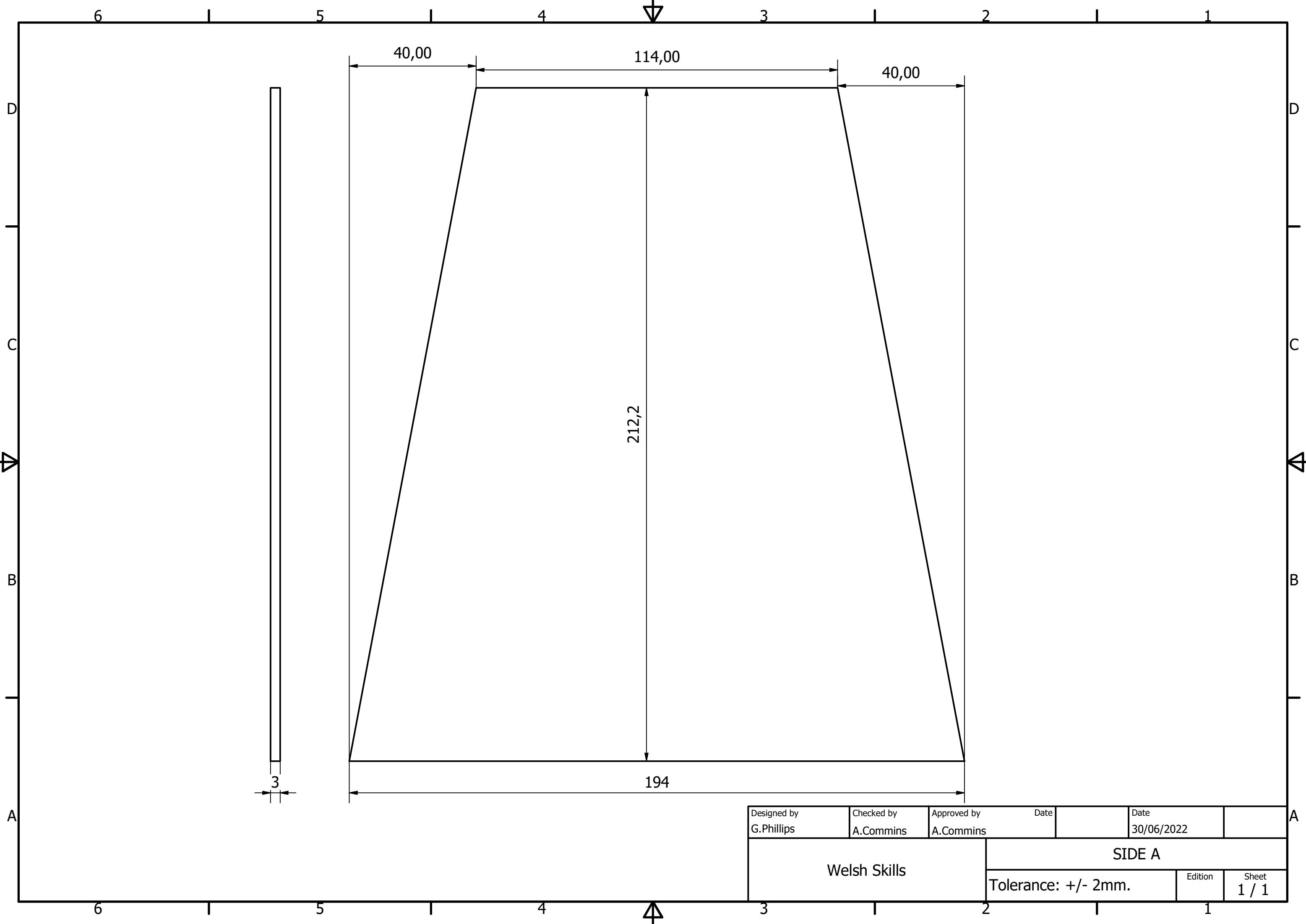


Part to be Manually cut using thermal cutting processes.

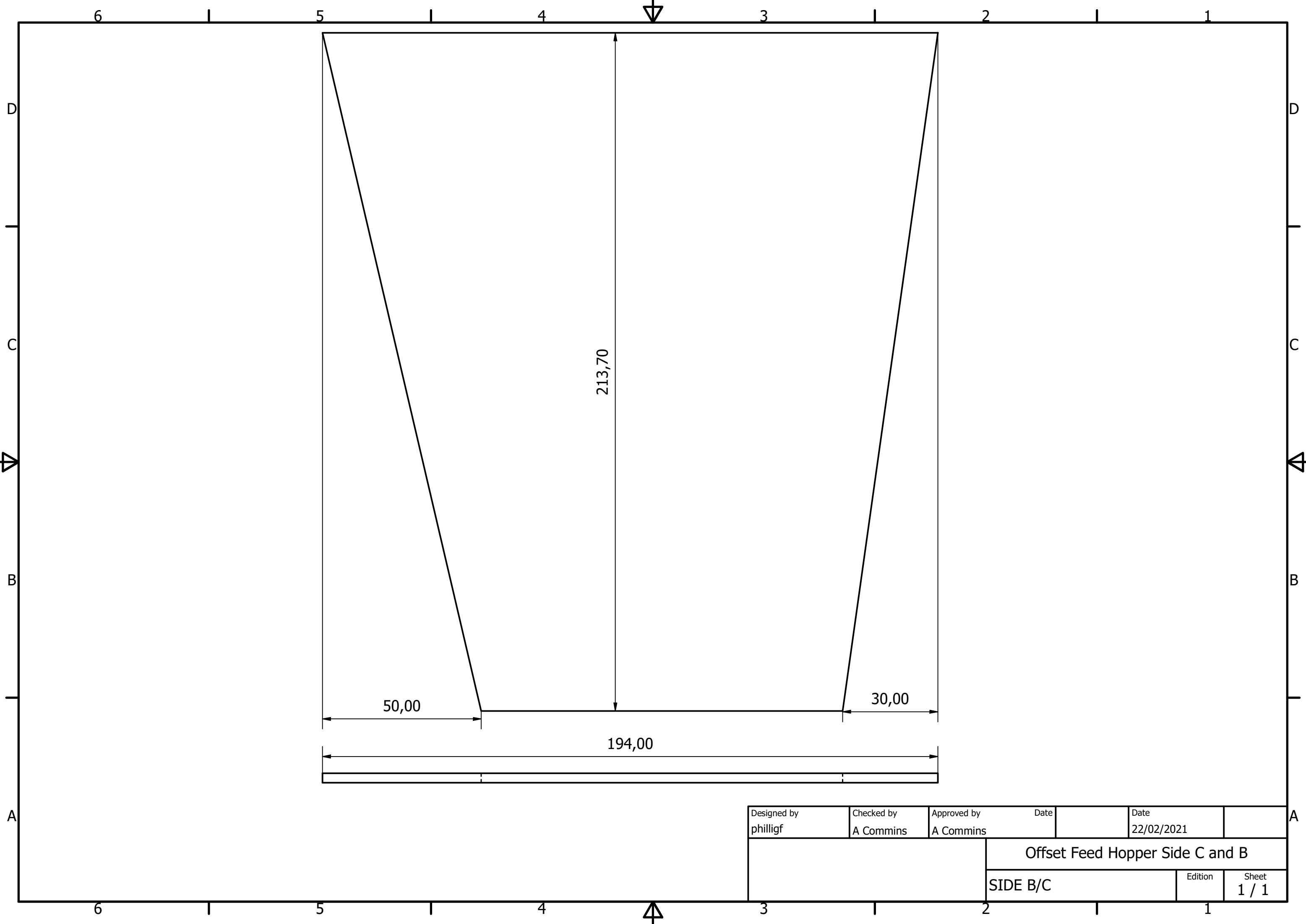
$\phi 9$  hole should be drilled.

Cut faces to be left un-touched. Dros can be removed using cold chisels.

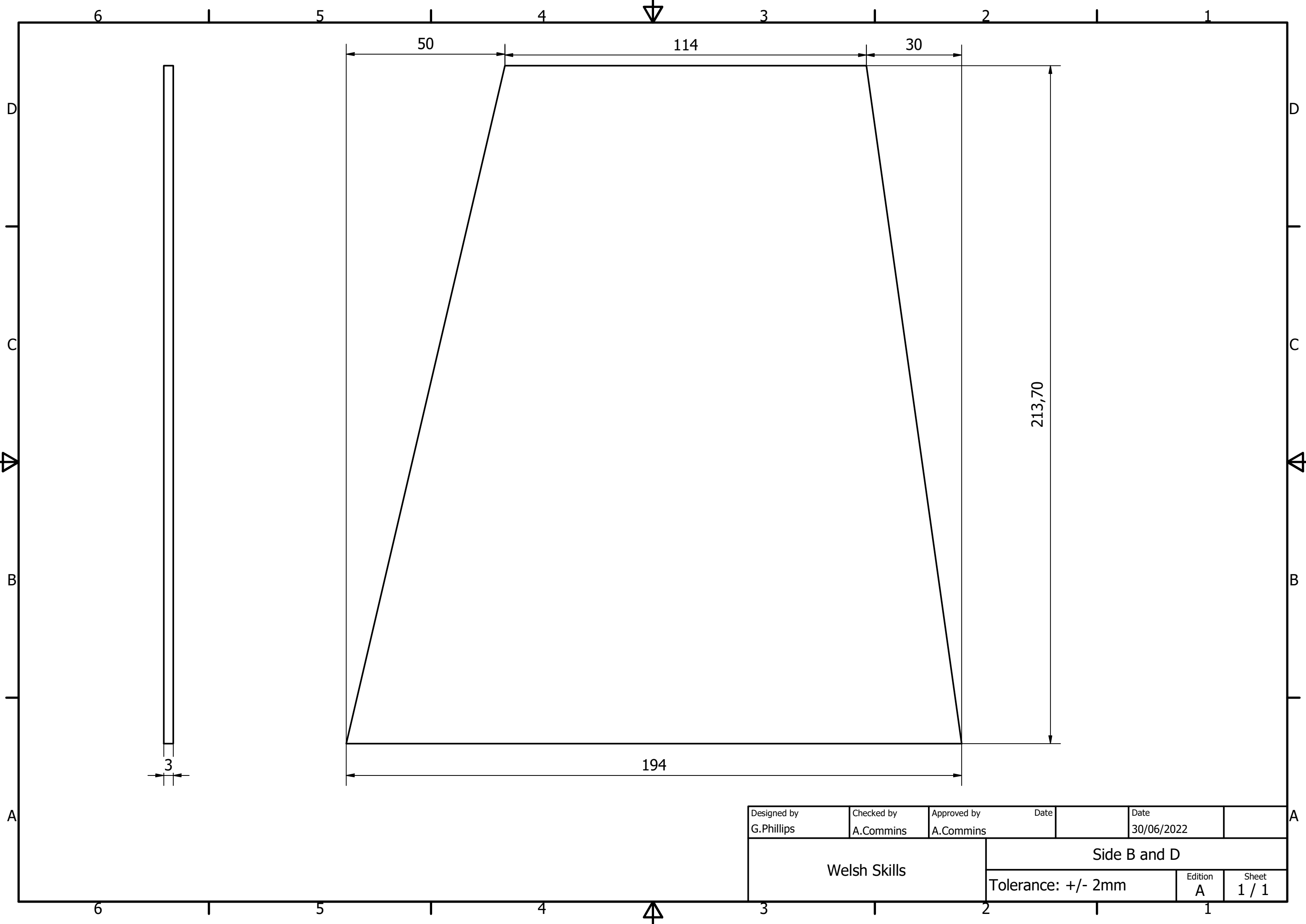
Designed by G.Phillips	Checked by A.Commins	Approved by A.Commins	Date	Date 30/06/2022
Welsh Skills.		Inspection cover.		
		Tolerance : +/- 2mm	Edition A	Sheet 1 / 1



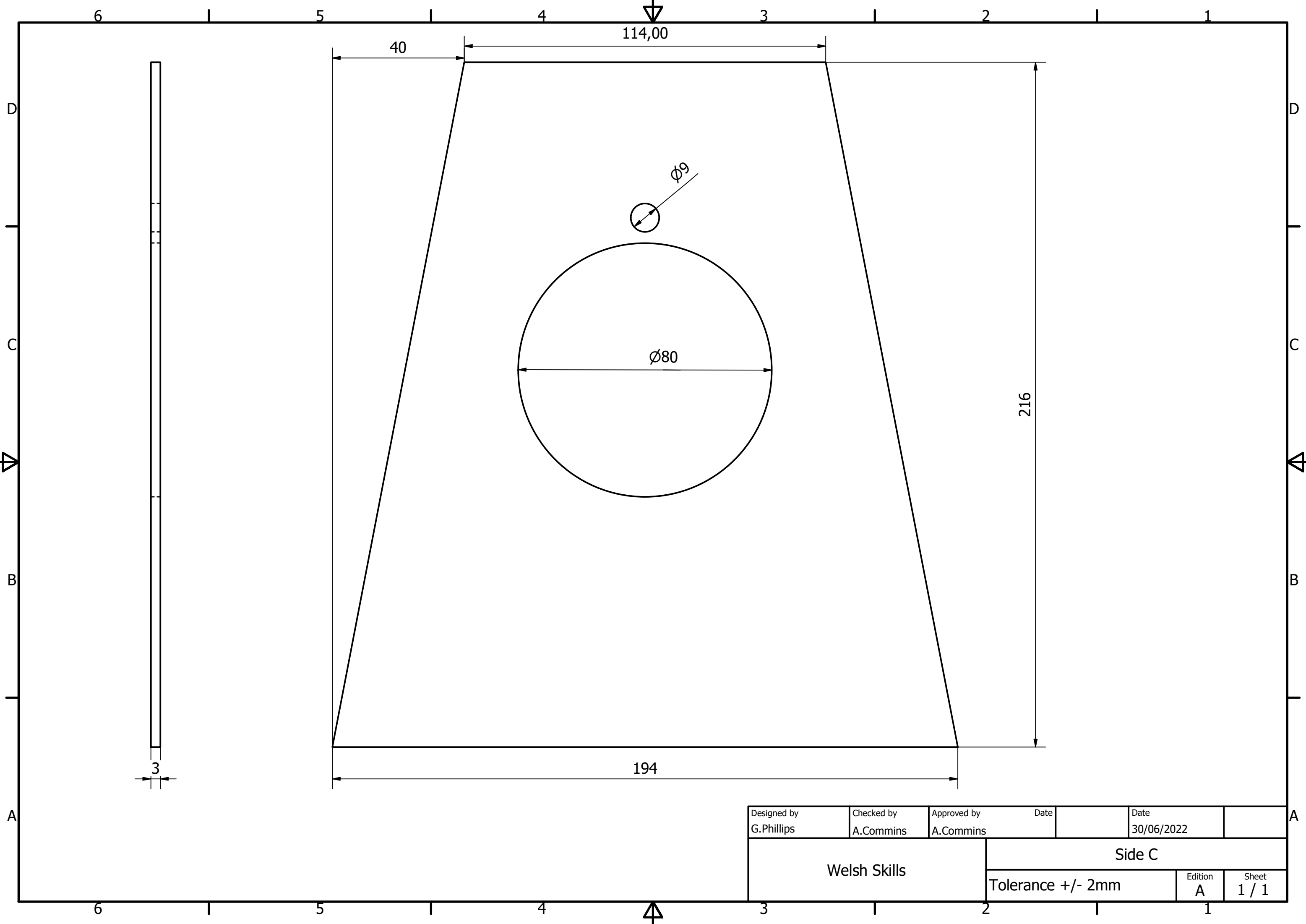
Designed by G.Phillips	Checked by A.Commins	Approved by A.Commins	Date	Date 30/06/2022
Welsh Skills		SIDE A		
		Tolerance: +/- 2mm.	Edition	Sheet 1 / 1



Designed by philligf	Checked by A Commins	Approved by A Commins	Date	Date 22/02/2021	A
			Offset Feed Hopper Side C and B		
			SIDE B/C		Edition 1 / 1 Sheet 1 / 1



Designed by G.Phillips	Checked by A.Commins	Approved by A.Commins	Date	Date 30/06/2022	
Welsh Skills			Side B and D		
			Tolerance: +/- 2mm		Edition A



Designed by G.Phillips	Checked by A.Commins	Approved by A.Commins	Date	Date 30/06/2022
Welsh Skills		Side C		
		Tolerance +/- 2mm	Edition A	Sheet 1 / 1